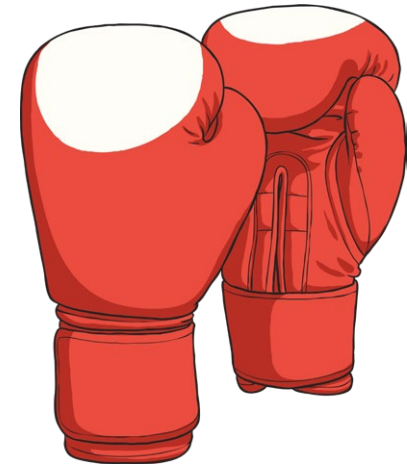




town



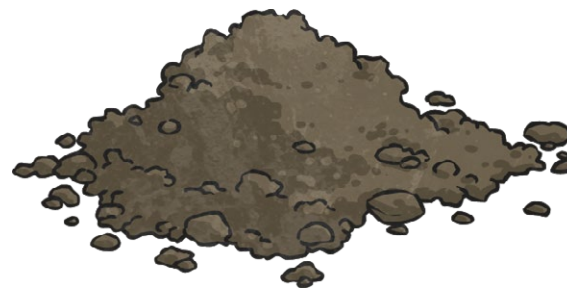
pair



boxer



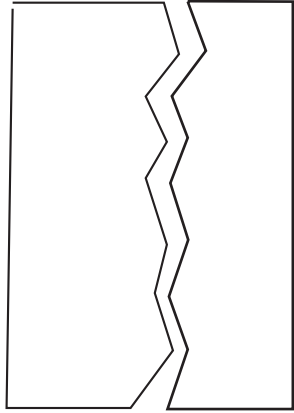
soil



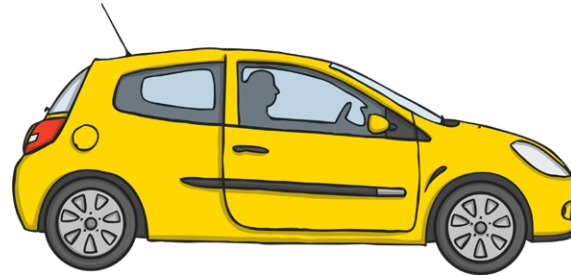
manure



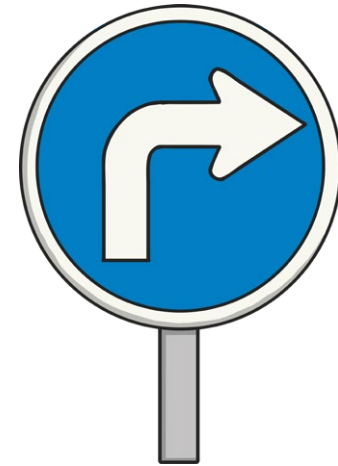
year



torn



car



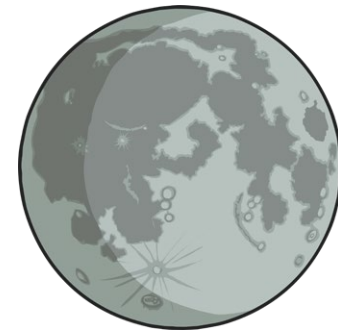
turn



coat



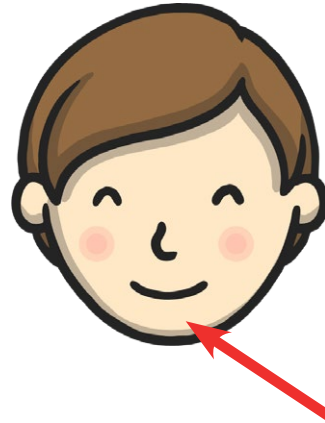
weep



moon



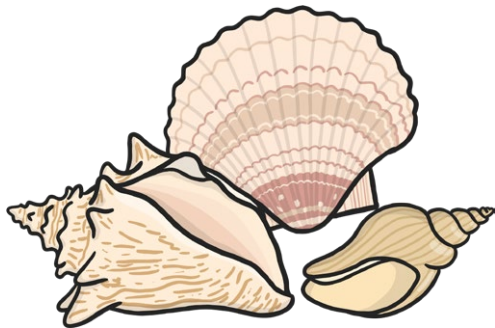
rain



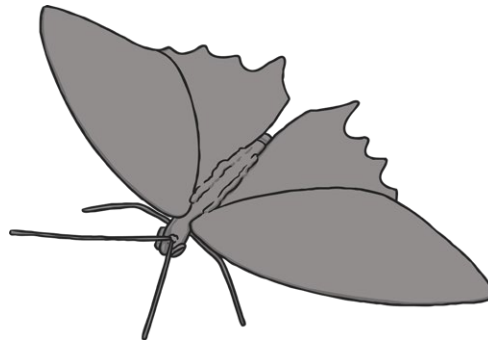
chin



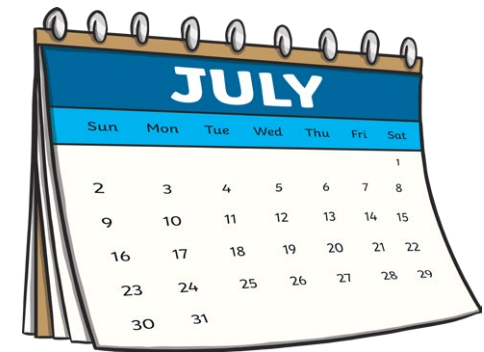
song



shell



moth



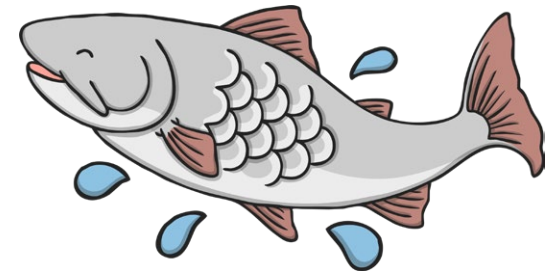
week



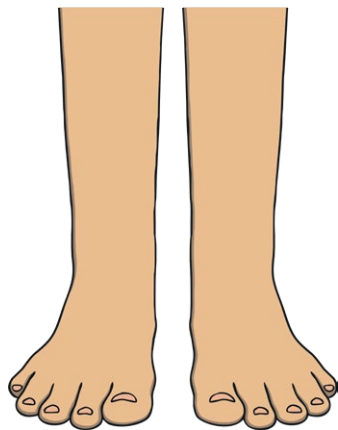
chop



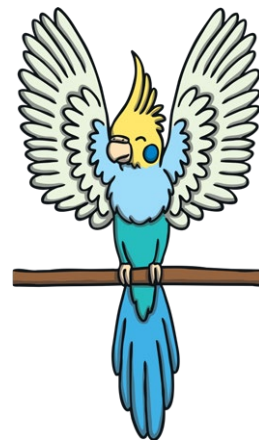
sail



fish



feet



wing



path



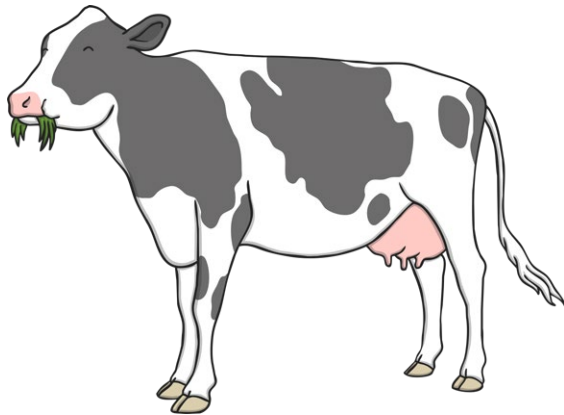
night



fur



fork



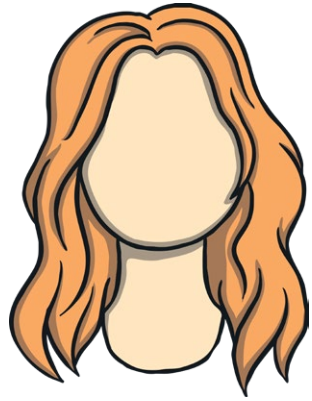
cow



soap



card



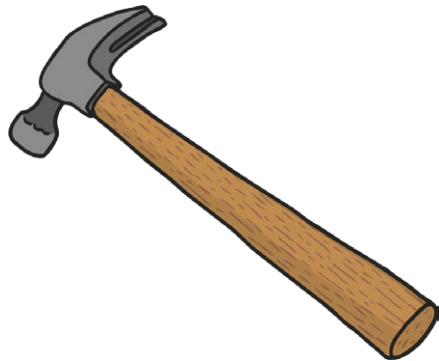
hair



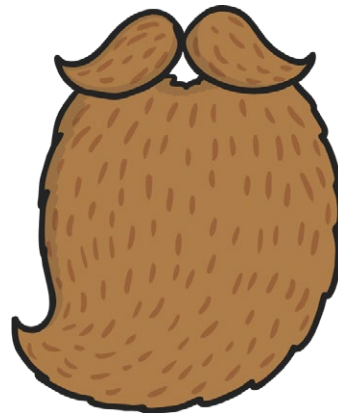
right



coin



hammer



beard



cure

Phase 3 Grapheme Words

Bingo Calling Card

beard

boxer

car

card

chin

chop

coat

coin

cow

cure

fish

fork

fur

hair

hammer

manure

moon

moth

night

pair

path

rain

right

sail

shell

spoon

soap

soil

song

torn

town

turn

week

weep

wing

year

Phase 3 Grapheme Bingo Calling Card

- ch
- sh
- th
- ng
- ai
- ee
- igh
- oa
- oo (long)
- ar
- or
- ur
- ow
- oi
- ear
- air
- ure
- er

ch

sh

th

ng

ai

ee

igh

oa

oo

ar

or

ur

ow

oi

ear

air

ure

er

